

50 WEST
23RD STREET
TWO TREES

MODERN NYC OFFICE SPACE

LEASE NOW

SUBSCRIBE TODAY!
LEARN MORE

REAL ESTATE WEEKLY

- [Contact](#)
- [Event Calendar](#)
- [Editorial Calendar](#)
- [Advertise](#)
- [Archives](#)
- [Subscribe](#)
- [Gallery](#)

Search the archive...

[Home](#) » [REBNY Watch](#)

REBNY showing its art with chashama partnership

By [rew](#)

7:16 am, March 25, 2015

Tweet { 3 }

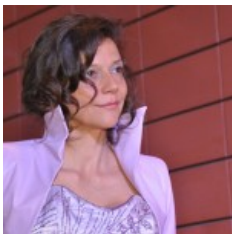
Recommend { 2 }

By **Steven Spinola**

Anyone who's ever struggled to succeed in New York City knows the meaning of Frank Sinatra's famous line, "If I can make it there, I'll make it anywhere."

It is this mindset which has led countless singers, actors, dancers, and other artists to our city over the years. To this day, the Ol' Blue Eyes anthem continues to inspire new arrivals to follow their dreams in the five boroughs.

REBNY believes that it is extremely important to embrace that ideal and ensure that New York will always be a place where ambitious dreams can become reality.



ANITA DURST

To further that mission, I am pleased to be able to announce that REBNY will be partnering with chashama, a nonprofit organization which supports New York City-based artists by providing spaces to create and exhibit their work.

Since it was founded in 1995 by Anita Durst, chashama has made a significant impact in our city's cultural, dynamic, and diverse environment.

It has transformed over 80 locations throughout the five boroughs, served over 12,000 artists, provided over 2,500 presentation space, presented over 2,500 events, and reached over 2,000,000 viewers. It has supported artists through various activities, participating in youth programs, local community boards, schools, BIDS, corporations, and much more.

MORE IN [REBNY WATCH](#) (1 OF 60 ARTICLES)

[Let's not hand Airbnb the keys to New York City](#)

This is all in addition to the immeasurably positive atmospheric effects chashama has had on the communities it has become a part of, and the large number of opportunities it has led to for New Yorkers of all ages, both directly and indirectly.

chashama also holds partnerships with important organizations such as the New York City Economic Development Corporation, The Janus Property Company, L+M Development Partners, Mid-Bronx Senior Citizens Council, Material for the Arts, and more.

Through these alliances, chashama has spent the past 20 years developing a network which reaches every corner of our city, proving that no community is too big or small to take part in for the amazing opportunities chashama has to offer.

Specifically, REBNY will be supporting chashama's new Access Real Estate for the Arts (AREA) initiative, which will seek out structurally sound spaces compliant with city building codes and permits and recondition them for specific arts use.

chashama will also provide several benefits to landlords, such as facility management, comprehensive insurance, and logistical and curatorial support for the installation and management of exhibition and artists.

They will also screen and interview all artists before they are allowed into a space, allow brokers to show spaces as needed, and provide comprehensive insurance coverage with up to \$5 million liability.

By working alongside chashama, REBNY hopes to expand chashama's reach and maximize the number of neighborhoods and communities in New York which can be rejuvenated through this program.

With chashama's high level of professionalism, skills in facility management, and logistical and curatorial support systems, this partnership is sure to result in tremendous benefits for not only artists in New York, but also for their communities and REBNY's members.

This partnership will also allow REBNY to provide its membership with broader and more creative uses for unused spaces, raise property profiles, and form positive connections with local communities through chashama's cultural programming.

As one of the driving forces behind New York City's economy, the real estate industry has much help to offer other industries for the greater good of our city, and chashama represents a prime example of that level of collaboration.

chashama is a unique, innovative, and creative model which holds tremendous potential for growth, and REBNY looks forward to doing its best to assisting it in reaching that potential.

To get involved, visit www.chashama.org or contact Jeanine Wilson at Jeanine@chashama.org.

In other REBNY news:

SPOTLIGHT ON TRANSPORTATION: Don't miss our recent educational video on the critical role transportation infrastructure plays our region's overall economic health and development. Visit rebny.com to watch our Chairman Rob Speyer and New York's leading transportation experts discuss the role mass transit plays in the metropolitan area, major projects underway, and future challenges facing our transit system.



ROB SPEYER

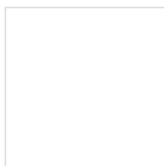
March 31 is the REBNY Members' Luncheon. From 11:45 a.m. to 2:00 p.m., join REBNY members and industry leaders as they gather to hear guest speakers Scott Rechler, CEO of RXR Realty, Douglas Harmon, Senior Managing Director of Eastdil Secured, and Jeff Sutton, Founder and President of Wharton Properties, as they discuss "Market Forces & Factors Behind Today's Billion Dollar Retail & Office Deals." The Luncheon will be at the Hilton New York, and more information can be found either on REBNY.com or by contacting Ossie Shemtov at OShemtov@rebny.com.

Submissions for Retail Deal of the Year are due on April 2 by 5 p.m. Be sure to check the official contest rules at rebny.com, and for more information contact Desiree Jones at DJones@rebny.com.

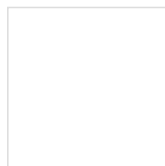
REBNY's next Residential Rental Clinic Seminar, "Pitching Landlords and Developers For Exclusive Listings," is on April 10 from 9:30 a.m. to 10:30 a.m. in the Mendik Education Center.

Registration is required for this free seminar available to REBNY members only, which will feature speaker Karla Saladino of Mirador Real Estate. For more information, visit REBNY.com or contact Yesenia Dhanraj at YDhanraj@rebny.com.

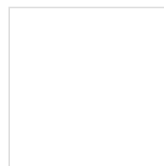
You might also like:



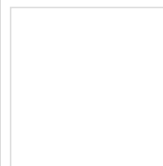
Equity office appoints Zachary Freeman as vice president of ...



Classic Villard mansion clicks with new e-tailer



Times Square light rail takes step forward



Folk tales re-writing rules of office location

Linkwithin

Other posts by [rew](#)

 Leave your response!

Add your comment below, or [trackback](#) from your own site. You can also [subscribe to these comments](#) via RSS.

Be nice. Keep it clean. Stay on topic. No spam.

Name (required)

Mail (will not be published) (required)

Website (optional)

You can use these tags:

` <abbr title=""> <acronym title=""> <blockquote cite=""> <cite> <code> <del datetime=""> <i> <q cite=""> <strike> `

This is a Gravatar-enabled weblog. To get your own globally-recognized-avatar, please register at [Gravatar](#).



Archives

Select Month ▼

[REW on Twitter](#)

- Idnani lands exclusive for salon's NYC roll-out [pic.twitter.com/HJn2XJV9yU](#) [about an hour ago](#)
- Idnani lands exclusive for salon's NY roll-out [rew-online.com/2015/03/25/idn...](#) via [@RE_Weekly](#) [about an hour ago](#)
- SELLING POINTS: Sitt buys Harlem rental; Record sale in Dyker Heights [rew-online.com/2015/03/25/sel...](#) via [@RE_Weekly](#) [about an hour ago](#)
- Cushman duo heads to Marcus & Millichap [rew-online.com/2015/03/24/cus...](#) via [@RE_Weekly](#) [about 19 hours ago](#)
- Rechler: Mini downtowns the next big thing [rew-online.com/2015/03/24/rec...](#) via [@RE_Weekly](#) [about 20 hours ago](#)

Stories by date

March 2015

S M T W T F S

1 2 [3](#) [4](#) [5](#) 6 7
8 [9](#) 10 [11](#) [12](#) [13](#) 14
15 [16](#) [17](#) [18](#) [19](#) [20](#) 21
22 [23](#) [24](#) [25](#) 26 27 28
29 30 31

[« Feb](#)

 [Subscribe to RSS](#)

2,000 - 100,000 sf Available
Medical, Technology, Lab, Call Center

New Local Owner / Manager
New Fitness Center & Food Service
On-Site Engineer
Building Signage Available

2649 & 2651 Strang Blvd.
Northern Westchester Executive Park
Yorktown Heights, New York

GHP GHP OFFICE REALTY
Andrew M. Greenspan
914-642-9300
www.ghpoffice.com

Latest Gallery



[Visit Gallery](#)

Recently Popular

- [20 Mar, 2015: HAVE YOU HEARD: Brooklyn to make Million Dollar Listing TV debut. Buddy Hackett's apartment up for grabs](#)
- [20 Mar, 2015: NEW DEVELOPMENT: "Beach" building sales going swimmingly.](#)
- [19 Mar, 2015: Citi Habitats Toasts Success at Annual Awards Celebration](#)
- [18 Mar, 2015: Kings Portfolio closes at \\$236M](#)
- [20 Mar, 2015: Gramercy condo building mixes the past and present](#)
- [19 Mar, 2015: Colliers taps Gallucci to build NY brand](#)

THE CLOSER

You're not quite sure how or when it happened, but the deal was closed.

Perfectly Coiffed Hair

Most-used Phrase: "Done!"

Never Saw a Deal He Didn't Like

GFI REALTY SERVICES, INC. BROKER #21

GFI has been brokering deals successfully for over 30 years.

Categories

- [Brokers Weekly](#)
- [Construction & Design](#)
- [Deals & Dealmakers](#)
- [Editorial Supplements](#)
- [Featured](#)
- [Finance & Accounting](#)
- [Green Building](#)
- [Headline](#)
- [ICSC RECon](#)

- [Legal](#)
- [Mergers and Acquisitions](#)
- [Office Market](#)
- [Opinion](#)
- [Photo Gallery](#)
- [Property Managers](#)
- [REBNY Watch](#)
- [Retail](#)
- [Uncategorized](#)

SPECIAL SECTIONS

- [Advertise](#)
- [Archives](#)
- [Contact](#)
- [Editorial Calendar](#)
- [Event Calendar](#)
- [Subscribe](#)

Real Estate Weekly

Real Estate Weekly has been published weekly since 1954. The publication reaches over 30,000 readers in New York, New Jersey, Connecticut, Long Island and Westchester. Subscribers rely on REW for its late-breaking news and recent developments affecting the commercial, residential and industrial markets. In addition, REW publishes monthly supplements which focus on specific aspects of the real estate industry. REW is read by building owners, property managers, brokers, developers, lending service companies, attorneys, architects and more.

[Subscribe to REW](#)