

# FRAME[ ]WORK

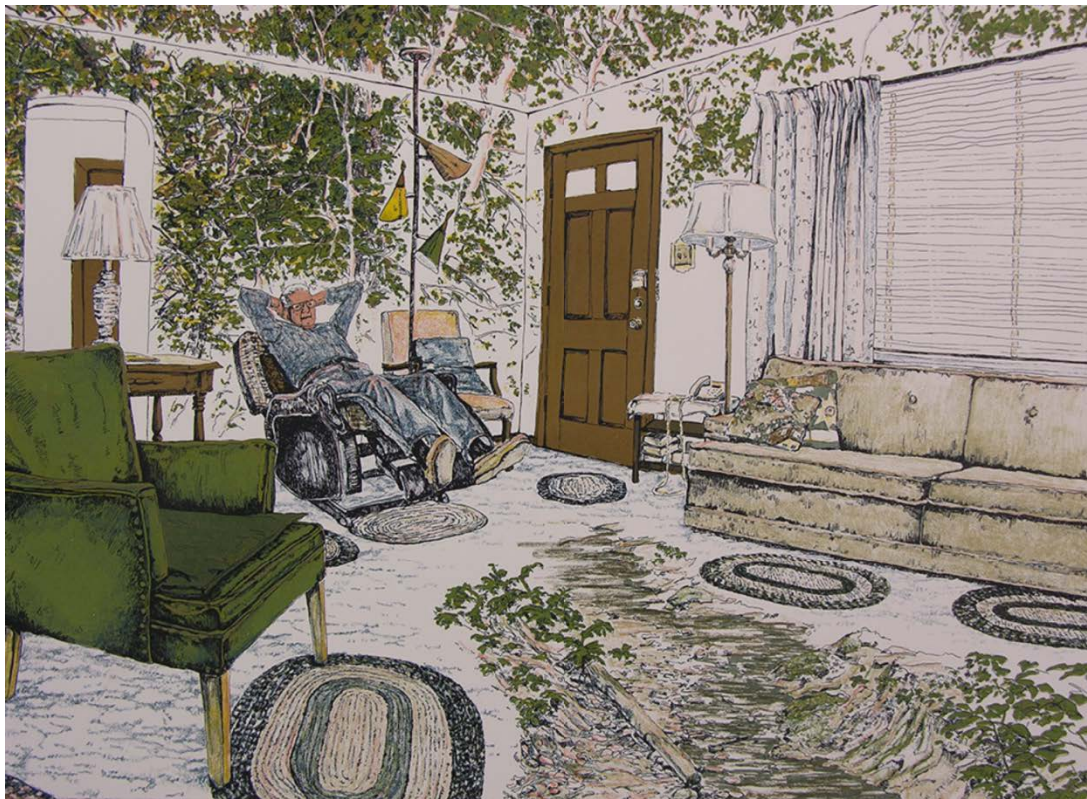
## THREE TO SEE: ART OPENINGS IN NEW YORK

Published January 28, 2016

<http://frameworkmagazine.com/three-things-to-see/2016/three-to-see-art-openings-in-new-york/>

Now that #StormJonas has passed and temperatures expected to stay above freezing for the rest of the week, there's no excuse not to get out and see new work opening at New York City galleries. Below, find three picks that are bound to thrill the print-lover, plant-lover, and paint-lover in you.

### NEW PRINTS 2016/WINTER



Kathy McGhee, “Reminiscence”, 2015, Screenprint, Edition: 23, Printed and published by the artist.

**WHO:** Group show featuring fifty-two artists.

# FRAME[ ]WORK

## THREE TO SEE: ART OPENINGS IN NEW YORK

**WHAT:** *New Prints 2016/Winter*

**WHEN:** Opening Thursday, January 28th | 6 – 8PM

**WHERE:** [International Print Center New York](#)

**WHY:** Founded in 2000 as the first and only non-profit institution devoted to fine art prints, International Print Center New York presents *New Prints 2016/Winter*. Fifty-three works will be shown from fifty-two artists, selected from over two thousand submissions. IPCNY's "New Prints" Program organizes the event three times each year.

---

# FRAME[ ]WORK

## THREE TO SEE: ART OPENINGS IN NEW YORK

### ARBOREAL ANXIETIES



Arboreal Anxieties courtesy of Mary Ivy Martin.

**WHO:** Mary Ivy Martin

**WHAT:** *Arboreal Anxieties*

**WHEN:** Opening Friday, January 29th | 6PM – 8PM

**WHERE:** [Chashama](#)

**WHY:** Chashama gallery will present *Arboreal Anxieties* by Mary Ivy Martin in a two-week long performance. Chashama explains, “During the exhibition, the gallery will become a studio as artist

# **FRAME[ ]WORK**

## **THREE TO SEE: ART OPENINGS IN NEW YORK**

Mary Ivy Martin deconstructs discarded Christmas trees and transforms them into wearable sculptures. Once completed, Martin will take to the streets while wearing her sculptures where she will ritualistically return to the sites where the discarded trees were found.” On the final day of the exhibition, Mary will display the tree sculptures as well as other documentation of her performance.

---



# FRAME[ ]WORK

## THREE TO SEE: ART OPENINGS IN NEW YORK

EMERGING TO ESTABLISHED



# FRAME[ ]WORK

## THREE TO SEE: ART OPENINGS IN NEW YORK

“Fashion Victim” acrylic on fashion bag by [Ben Frost](#).

**WHO:** Group show featuring seventeen artists.

**WHAT:** *Emerging to Established*

**WHEN:** Saturday, January 30th | 12PM – 6PM

**WHERE:** [Krause Gallery](#)

**WHY:** Since opening in 2004 in the Lower East Side, Krause Gallery has exhibited contemporary artists working in a variety of media and styles. *Emerging to Established* plans to capture a snapshot of the current contemporary art scene. A portion of the show features Ben Frost’s “satirical jabs at consumerism” and Hansky’s caricatures of celebrities.