



## South Brooklyn Network

<http://www.southbrooklyn.com/news-and-stories/beyond-south-brooklyn/ars-nova>

Thursday, January 14 - Saturday, February 20, 2016



 TABLA RASA GALLERY  
224 48TH ST.,  
BROOKLYN, NY 11220

ARS NOVA

### Ars Nova

- 

TABLA RASA GALLERY in partnership with chashama presents the exhibition "**Ars Nova**", is borrowed from a term which generally applies to a musical style from the Late Middle Ages, from Thursday, January 14 - Saturday, February 20, 2016, with an Artists Reception on Thursday, January 14.

The unifying factor of the artwork in this exhibition parallels the **Ars Nova** movement in the sense that there is a freshness, and a "newness" beyond the formalities and traditions of image making. All of the artists were selected from the chashama studio program, where emerging and mid-career artists create their art in a nurturing and affordable environment. Located in the BAT (Brooklyn Army Terminal) buildings, chashama, in partnership with Tabla Rasa Gallery, represents the new frontier of arts and culture in Sunset Park.

**Mitch Patrick** creates his topological digital images with a 3-D printer. His application of technology, addressing the history of the pixel by specifically tapping into the NASA programs, results in a new form of materializing and viewing digital images.

In contrast to using cutting-edge digital printing, **Michael Watson** turns to fundamental elements. Utilizing fire and rice-based mediums his unconventional process results in compelling charred abstractions, specific to his cultural experience.

**Athena LaTocha**, born in Anchorage, Alaska, also uses an unconventional approach when painting her images aerially with her materials on the floor. At once abstract and suggestive of wild earth-scapes, Jaune Quick-to-See Smith describes her images: "Her work has high drama, the earthen kind, as in arid places with volcanos, earthquakes, high winds and spewing ash."

**Kenneth E. Parris III** investigates the exploitation of success and the American dream. "The human form and tension in the body is used as the physical embodiment of manipulative forces and a representation of the conflict between the ideal and reality."

**Linda Lee Nicholas** is a multidisciplinary artist using non-traditional processes in mixed media work. The amorphous forms draw your attention, alternately suggesting physical forms in nature and fantasy.

Contemporary Filipino artist **Julio Jose Austria** creates works focused on urbanization and migration based upon his life experiences. The form generates meaning. Abstract elements of color, texture and stroke reveal themes of social realism.

**Suyeon Na** is a multi – media artist born in Seoul, Korea the crystalline collage and painted images of her work mirror dreams, fairytales and fantasies that are closely linked subconscious and animalistic instincts of humans, as part of nature.

Using a predominantly mono-chromatic palette, **Syd Glasser's** rugged landscapes are influenced by her excursion to Iceland.

**Tirtzah Bassel** paints large-scale images, observing anew the nature of daily interactions. After initial quick sketches drawn directly from observation in department stores, she drips, smears, slashes and strokes paint across the canvas, juxtaposing the sensual qualities of oil paint with the mundaneness of shopping.

In the urban landscapes of **Carl Auge**, images of contemporary reality and personal narrative collide in boldly painted canvases.

In addition to the aforementioned wall-hung artwork, **Nicholas Fraser** presents *Follow*, an ongoing video- based portrait of contemporary urban life in public spaces, comprised of more than 2,400 videos of storefronts throughout New York.

### **DISCUSSION DESCRIPTION**

Kenneth E. Parris III discusses the role of the figure in his paintings with William Petroni on Saturday, January 23rd at 2:30 pm. Mr. Petroni is an Art Collector, Studio Manager for Cecily Brown, Managing Director of Cristin Tierney Gallery, and has danced with Melissa with the Pam Tanowitz Dance Company.

The conversation will focus on Kenneth's series inspired by the backstage life of the Merce Cunningham Dance Company on their final world tour and how this evolved into a new body of work that investigates the exploitation of success and the American Dream. The discussion includes Modern Contemporary Dancer and former Cunningham Company member Melissa Toogood, a subject in both bodies

### **About Tabla Rasa Gallery**

Tabla Rasa Gallery is located in the burgeoning art destination of Sunset Park, Brooklyn. The gallery is known for their consistently stunning exhibitions. Within the 4000 square foot turn of the century carriage house, the gallery exhibits primary and secondary market artwork by emerging, mid-career, and established artists, in all media, including painting, sculpture, installation, drawing, print media, digital, film and video. of work.

Exhibitions are free and open to the public. It is recommended to call 718.833.9100 for events and schedule updates.

### **About chashama**

chashama, which means "to have vision" in Farsi, nurtures artists by transforming underutilized properties into affordable work and presentation spaces for artists, performers, youth and community groups.

Since 1995, chashama has revitalized over 80 properties, providing invaluable space to create for more than 12,000 artists. chashama empowers artists at any stage of their career with services that offer continuous opportunities to create, develop and present. chashama also aspires to bring the benefits of art and creativity to New Yorkers of all ages and backgrounds with over 130 free, public events and access to cultural programming throughout New York City.

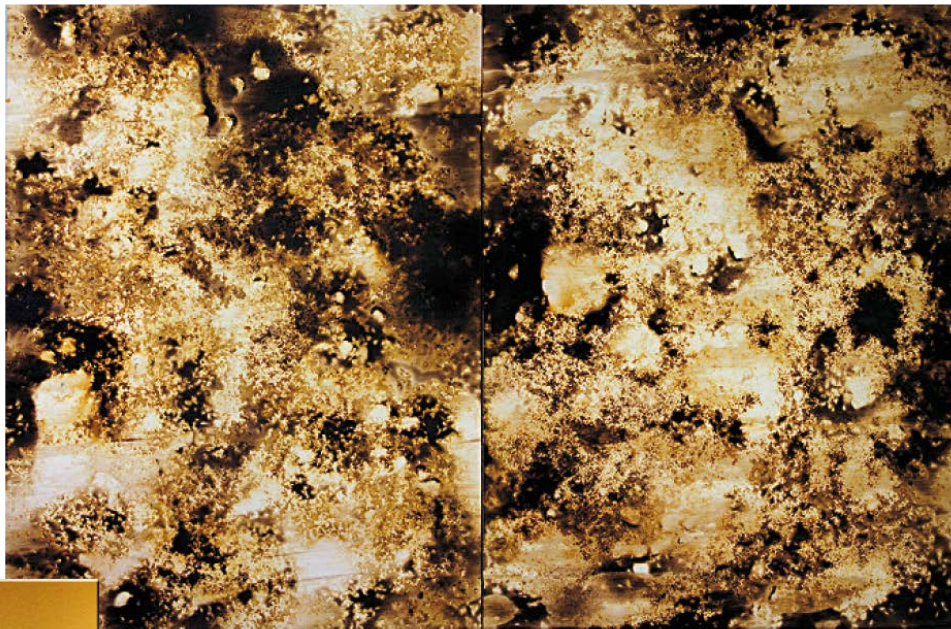


TABLA RASA GALLERY  
224 48TH ST.,  
BROOKLYN, NY 11220

# ARS NOVA





*Linda Lee Nicholas, Brainy Bouquet, 34x42, Ink on Paper with Acrylic / 2015*



*Carl Auge, Brown Sky, oil on canvas, 2009, 40x80*



*Suyeon Na, Flow, watercolor, gouache, collage on paper, 2015, 36x48*





*Syd Glasser, A Horse For Basquia, Collage and Mixed Media, 16 x 20*



*Michael Watson, Body II, charred rice residue on charred birch plywood, 2014, 48 x 72*





*Kenneth E. Parris III, Come Back My Peace Of Mind, Mixed Media on Canvas, 2015, 84 x 84*